

# ECED 4402: Real Time Systems

## Tutorial 2: Setting up Putty

Emad Khan, MEng  
21 August 2017

### **Introduction**

Putty is a Windows-based terminal-communication program that can be used to communicate with the Tiva. Through the USB/Debugging port, the Tiva appears as a serial communications (UART) port. Configured correctly, Putty can be used to send and receive data from the user to the Tiva via characters typed on the keyboard.

### **Download/Install Putty**

Putty can be downloaded from its author's homepage at:

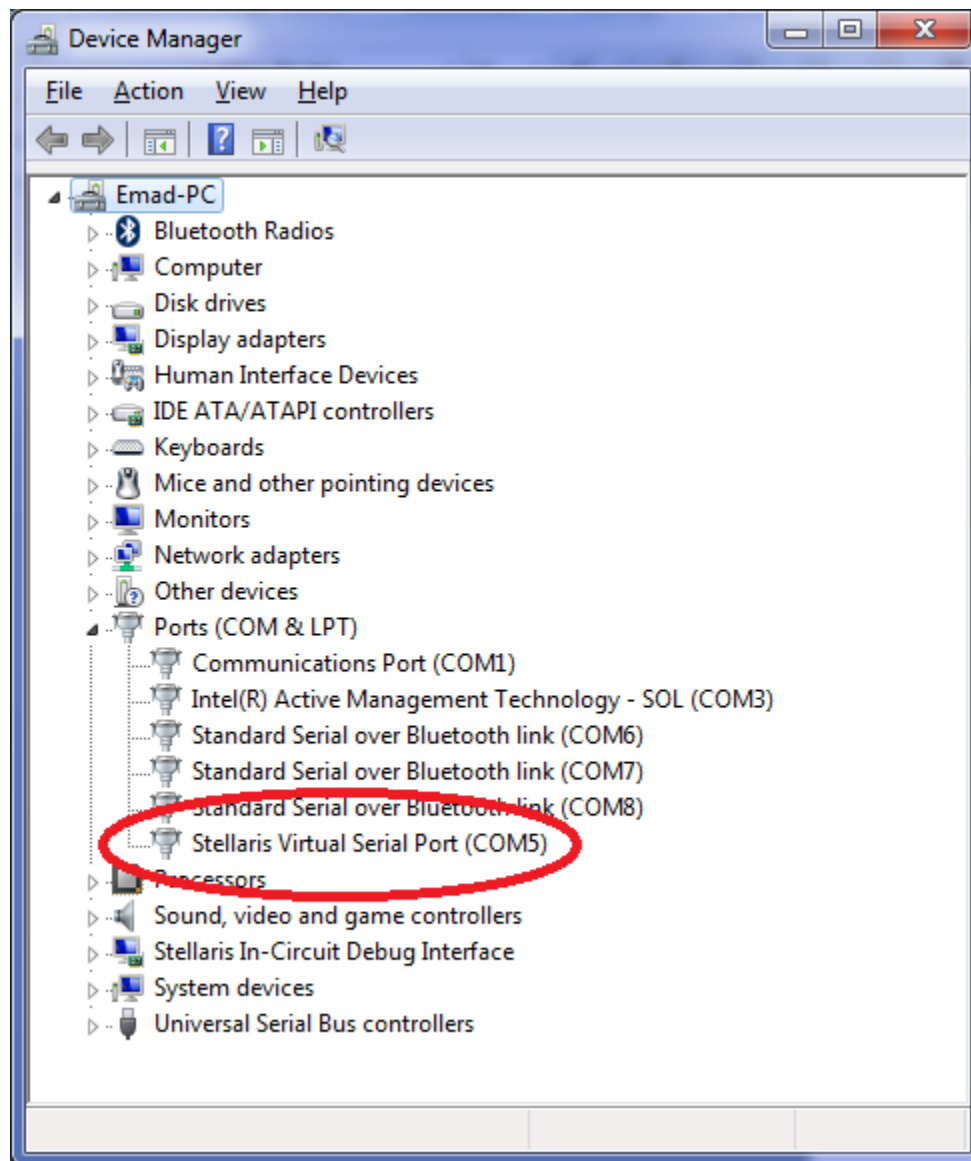
<https://www.chiark.greenend.org.uk/~sgtatham/putty/latest.html>

A direct link for a 32-bit version is:

<https://the.earth.li/~sgtatham/putty/latest/w32/putty.exe>

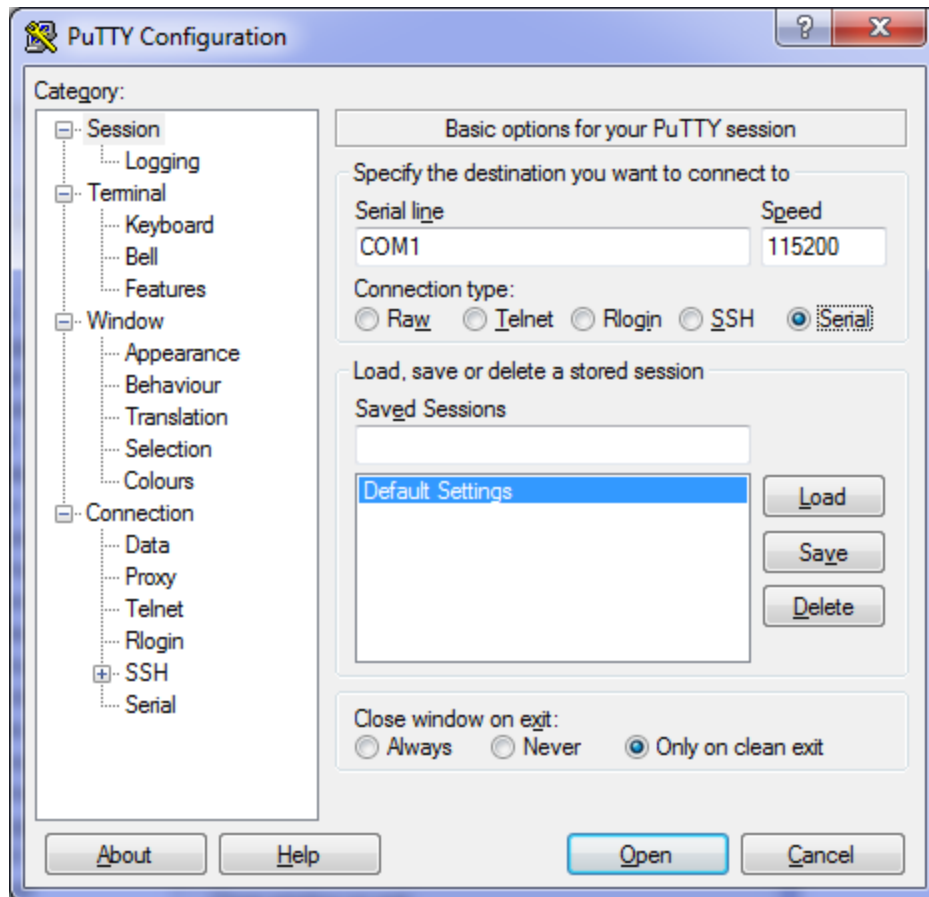
## Configuring Putty Settings

Open Windows Device Manager to find the correct port number for the Tiva board:



On this computer the serial port appears as COM5. Look for the name “Stellaris Virtual Serial Port” under your computer for the correct port number.

Next, open Putty and find the following screen:

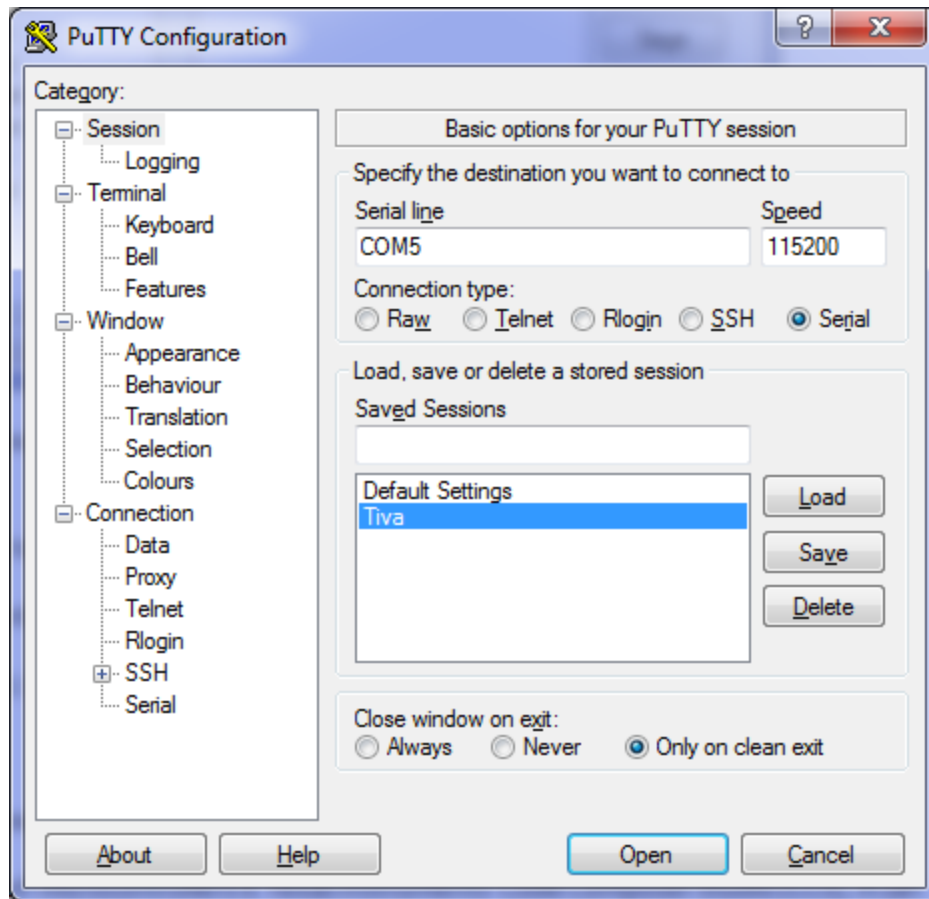


Change the Serial line to your communications number (in this example, “COM5”) and select “115200” as the speed.

Select “Serial” as the connection type.

By typing “Tiva” as the name of the session and clicking “Save”, it will be possible to setup Putty directly in subsequent sessions.

If the settings seem correct, try to open a connection by clicking “Open”:



This should open a blank screen which is waiting for output from the Tiva board. If an error is displayed by the PuTTY program; make sure you have the correct settings and the Tiva board is plugged in and powered.

